



Drilling Services



Universal's Drilling Division offers complete professional Geotechnical and Environmental drilling, engineering support and laboratory testing which are vital services to the design and construction of a project. Subsurface soil, rock and ground water conditions identified, detected and classified play an important role in a project as the architectural, civil and structural design that's above ground. This is especially true when construction is being considered on a property which may also be potentially contaminated.

Properly performed geotechnical and environmental drilling services can result in improved foundation design, reduced construction costs and ensure real estate transactions are sound. Universal's responsibility is to provide our clients with accurate and representative information concerning subsurface conditions.

Universal's Drilling Division maintains its own drilling fleet and support equipment, consisting of:

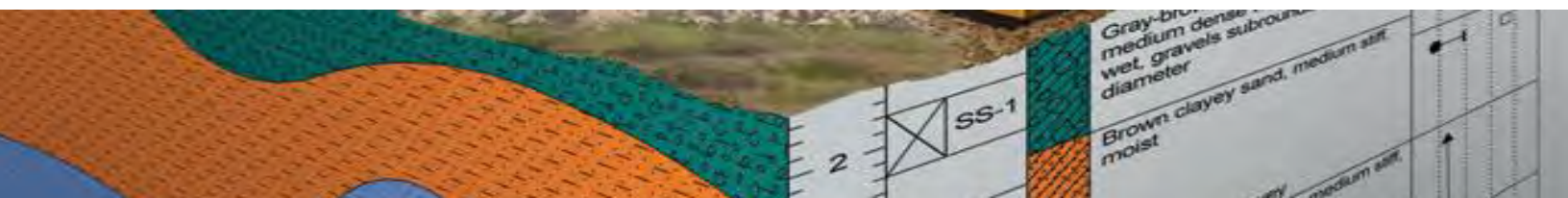
- (2) Acker Soil Sentry Truck Mounted
- (2) CME 55 Truck Mounted
- (1) Mobile B57 Rubber Tire ATV
- (1) Mobile B57 Truck Mounted
- (1) Geoprobe® 6600 Track
- (1) Geoprobe® 5400 Truck
- (2) Acker Portable Tripods
- (10) Core Drilling Machines
- (2) Box Trucks/ Mobile Laboratories w/ On Board Generators
- (1) Skid Steer Loader
- (1) Backhoe Excavator
- (1) Underground video camera system (capable of depths -600)

And a battery of Augers, Drill Rod, Cutter Heads/ Roller Bits, Core Barrels, Pumps and Support Equipment

Subsurface explorations are conducted for commercial projects (high-rise, low-rise and warehouses), industrial and manufacturing plants, schools and universities, residential developments, roadways, railways, airports, tunnels and bridge projects. Universal's Drilling and Engineering Divisions provide services to Design Consulting Engineers and Architects (E/AoR), Government Agencies, Public and Private Owners and Contractors. Our services include:

Engineering Support Services

- Subsurface Investigation Reporting
- Foundation Recommendations
- Development of Environmental Sampling Plans
- Development of Construction Documents
- Development of Remediation Plans
- Boring Logs, Field Reports and Photo Logs
- Geotechnical Laboratory Testing
- Existing Footing and Foundation Investigation
- Phase I & II Environmental Assessments

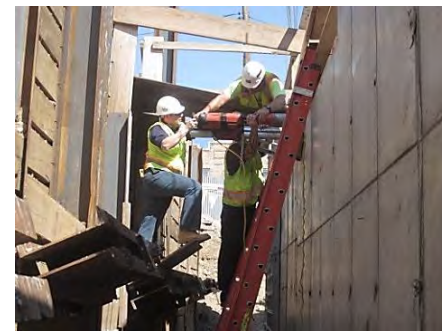


Geotechnical & Environmental Drilling

- Subsurface Exploratory Investigations
- Geotechnical / Environmental Drilling & Sampling
- Foundation Test Borings
- SPT and Shelby Tube Sampling
- Helical Pile Drilling and Installation
- Geothermal Well Drilling
- Plum Delineation
- Geoprobe® Drilling Services
 - Macro Core Sampling
 - Discrete Sampling
 - Continuous Sampling
 - Gas, Water & Vapor Extractions
- Rock Coring (NX to HQ Wire line)
- Monitoring well Installations
- Instrumentation Installation
- Water Sampling & Testing
- Pavement and Wall Cutting
- Drum & Container Management
- Ground Treatment Injections
- MPT Services
- Test Pitting & Excavating Service
- Underground Video Logging
- Grouting
- Percolation Testing
- Contaminated Soil Removal/ Treatment
- Utility Clearing/ Trenching

Core Drilling

- Pavement, Walls, Floors and Ceilings
- Sidewalk Coring
- Asphalt Pavement
- Runway Pavement Cores
- Block and Masonry Wall
- Bridge Decks
- Tunnel Walls
- MEP Openings 1" to 24"+
- Hole Openings 1" to 24"



Corporate Headquarters
73 Otis Street
West Babylon, NY 11704

T. 1.855.UTEST47

F. 631.491.5959

E. dispatch@universaltest.com